

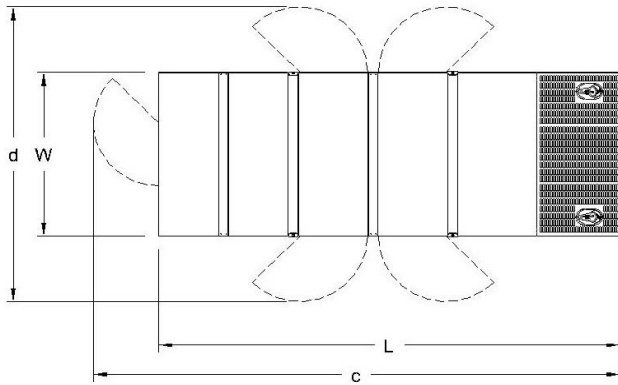
GENERATOR SET

Power Ratings

Voltage, Frequency	PRP	ESP
400V, 50Hz cosφ = 0.8	300kVA / 240kW	330kVA / 264kW
Engine Make / Model :	Scania - DC09072A 02-13	
Generator Make / Model :	Leroy Somer - TAL046F	
Control Panel :	ComAp Inteligen AMF9	
Charge Alternator [V / A] :	28V / 100A	
Battery Charger [V / A] :	24 / 5	
Battery / Capacity [V / Ah] :	2 x 120 Ah	
Block Water Heater [W] :	1500 W / 230V	
ATS Model / Length x Width x Height * :	ATS 500A / 750X750X300	

Fuel Consumption

Load	110%	100%	75%	50%
[lt / h]	68,13	60,93	44,29	30,15
Fuel Tank Capacity [lt - h] :	470 ltrs open skid 625 ltrs canopied			
Based on diesel fuel with a specific gravity of 0.85 and conforming to TS EN590 Class A2				



Diesel Engine

Manufacturer :	Scania
Engine Model :	DC09072A 02-13
No. of Cylinders / Alignment :	5L
Bore / Stroke [mm] :	130 / 140
Compression Ratio :	16,0/1
Displacement [lt] :	9,3
Engine Speed [rpm] :	1500
Gross Engine Power ESP / PRP [kW] :	294 / 267

Generator

Manufacturer :	Leroy Somer
Alternator Model :	TAL046F
Bearings Type :	Single
Insulation Class :	H
Winding Pitch :	2/3
No. of Wires Terminal :	6
Frequency / Poles :	50Hz / 4p
Voltage (Ph-Ph / Ph-N) :	400V / 230V
Output Power (163°C / 27°C) :	330kVA / 264kW

Prime Power (PRP)

A Prime rated generator set is capable of providing power to a varying load for an unlimited number of hours per year. Ten percent overload is allowed at one in 12 hours.

Emergency Standby Power (ESP)

A Standby rated generator set is capable of providing max. power to a varying load for 200 hours per year. No overload is allowed.

Standard Reference Conditions

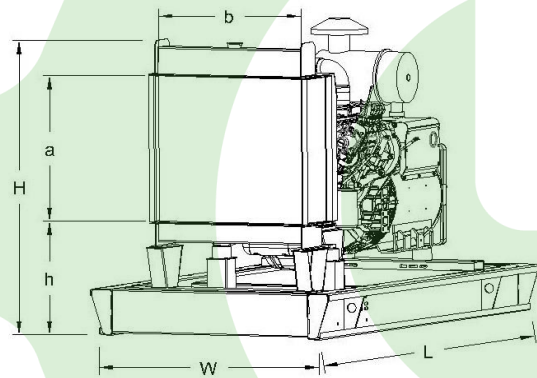
A specified values are given for 25°C ambient temperature, 100m above sea level and 30% relative humidity.

Dimensions & Weights

	L x W x H (mm) / c x d (mm)	Dry (kg) / Wet (kg)
Canopy :	3400 x 1400 x 2150 / 4350 x 2700	2940 kg
	L x W x H (mm) / a x b x h (mm)	Dry (kg) / Wet (kg)
W/O Canopy :	2900 x 1200 x 1820 / 1000 x 940 x 560	2350 kg

Dry = Without any liquid

Wet = With lube oil, coolant and fuel



Air Intake System :	Turbocharged / Intercooled
Governor Type / Class 8528 :	Electronic-EDC4
Total Oil Capacity [lt] :	36
Oil Type :	API CI-4 / 15W-40
Cooling System Capacity [lt] :	38
Recommended Fuel :	TS EN590, Class A2 Diesel
Emissions Compliance :	Fuel Optimized
Housing - Flywheel :	SAE 1/14

Regulation Type / Model :	AVR / R150
Protection Class :	IP23
Efficiency (Pf 0,8 Prime) :	92.3%
Voltage Regulation (Steady State) :	± 1.0%
THD (Total Harmonic Distortion) :	< 2,5% w/o load/ < 5 % on load
	15% 265kVA
Voltage Dip.	25% 505kVA
	30% 650kVA

f = 50Hz, Voltage dip is given for Locked rotor at P.F.=0.6 .