

## GENERATOR SET

### Power Ratings

| Voltage, Frequency       | PRP            | ESP              |
|--------------------------|----------------|------------------|
| 400V, 50Hz<br>cosφ = 0.8 | 275kVA / 220kW | 303kVA / 242,4kW |

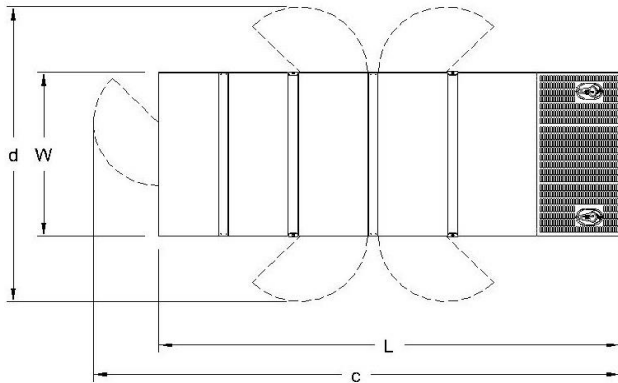
|                                       |                         |
|---------------------------------------|-------------------------|
| Engine Make / Model :                 | Scania - DC09072A 02-12 |
| Generator Make / Model :              | Leroy Somer - TAL046E   |
| Control Panel :                       | ComAp Inteligen AMF9    |
| Charge Alternator [V / A] :           | 28V / 100A              |
| Battery Charger [V / A] :             | 27.3 / 5                |
| Battery / Capacity [V / Ah] :         | 2 x 120 Ah              |
| Block Water Heater [W] :              | 1500 W / 230V           |
| ATS Model / Length x Width x Dept * : | ATS 400A / 750X300X750  |

### Fuel Consumption

| Load     | 110%  | 100%  | 75%   | 50%  |
|----------|-------|-------|-------|------|
| [lt / h] | 61,66 | 55,14 | 41,35 | 28,6 |

Fuel Tank Capacity [lt - h] : 470 ltrs open skid 625 ltrs canopied

Based on diesel fuel with a specific gravity of 0.85 and conforming to TS EN590 Class A2



### Diesel Engine

|                                     |                |
|-------------------------------------|----------------|
| Manufacturer :                      | Scania         |
| Engine Model :                      | DC09072A 02-12 |
| No. of Cylinders / Alignment :      | 5L             |
| Bore / Stroke [mm] :                | 130 / 140      |
| Compression Ratio :                 | 16,0/1         |
| Displacement [lt] :                 | 9,3            |
| Engine Speed [rpm] :                | 1500           |
| Gross Engine Power ESP / PRP [kW] : | 273 / 248      |

### Generator

|                                 |                  |
|---------------------------------|------------------|
| Manufacturer :                  | Leroy Somer      |
| Alternator Model :              | TAL046E          |
| Bearings Type :                 | Single           |
| Insulation Class :              | H                |
| Winding Pitch :                 | 2/3              |
| No. of Wires Terminal :         | 6                |
| Frequency / Poles :             | 50Hz / 4p        |
| Voltage (Ph-Ph / Ph-N) :        | 400V / 230V      |
| Output Power ( 163°C / 27°C ) : | 303 kVA / 242 kW |

### Prime Power (PRP)

A Prime rated generator set is capable of providing power to a varying load for an unlimited number of hours per year. Ten percent overload is allowed at one in 12 hours.

### Emergency Standby Power (ESP)

A Standby rated generator set is capable of providing max. power to a varying load for 200 hours per year. No overload is allowed.

### Standard Reference Conditions

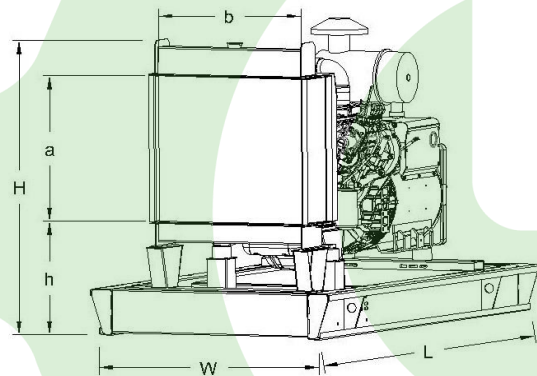
A specified values are given for 25°C ambient temperature, 100m above sea level and 30% relative humidity.

### Dimensions & Weights

|              | L x W x H (mm) / c x d (mm)           | Dry (kg) / Wet (kg) |
|--------------|---------------------------------------|---------------------|
| Canopy :     | 3400 x 1400 x 2150 / 4350 x 2700      | 2940 kg             |
|              | L x W x H (mm) / a x b x h (mm)       | Dry (kg) / Wet (kg) |
| W/O Canopy : | 2900 x 1200 x 1820 / 1000 x 940 x 560 | 2300 kg             |

Dry = Without any liquid

Wet = With lube oil, coolant and fuel



|                                |                            |
|--------------------------------|----------------------------|
| Air Intake System :            | Turbocharged / Intercooled |
| Governor Type / Class 8528 :   | Electronic-EMS             |
| Total Oil Capacity [lt] :      | 36                         |
| Oil Type :                     | API CI-4 / 15W-40          |
| Cooling System Capacity [lt] : | 38                         |
| Recommended Fuel :             | TS EN590, Class A2 Diesel  |
| Emissions Compliance :         | Tier II                    |
| Housing - Flywheel :           | SAE 1/14                   |

|                                     |                                  |
|-------------------------------------|----------------------------------|
| Regulation Type / Model :           | AVR / R150                       |
| Protection Class :                  | IP23                             |
| Efficiency :                        | 92,2%                            |
| Voltage Regulation (Steady State) : | ± 1.0%                           |
| THD (Total Harmonic Distortion) :   | < 3,5.0% w/o load/ < 5 % on load |
|                                     | 15% 180 kVA                      |
| Voltage Dip.                        | 25% 345 kVA                      |
|                                     | 30% 445 kVA                      |

f = 50Hz, cos φ = 0,6 , motor starting SHUNT is for given.