

## GENERATOR SET

### Power Ratings

Voltage, Frequency	PRP	ESP
400V, 50Hz cosφ = 0.8	N/A	825kVA / 660kW
Engine Make / Model :	Cummins - VTA28G6	
Generator Make / Model :	Leroy Somer - TAL049C	
Control Panel :	ComAp Inteligen AMF9	
Charge Alternator [V / A] :	24V / 35A	
Battery Charger [V / A] :	24 / 5	
Battery / Capacity [V / Ah] :	2 x 180 Ah	
Block Water Heater [W] :	2 X 2000 W / 230V	
ATS Model / Length x Width x Height4 * :	ATS 1250A / 1100X2100X600	

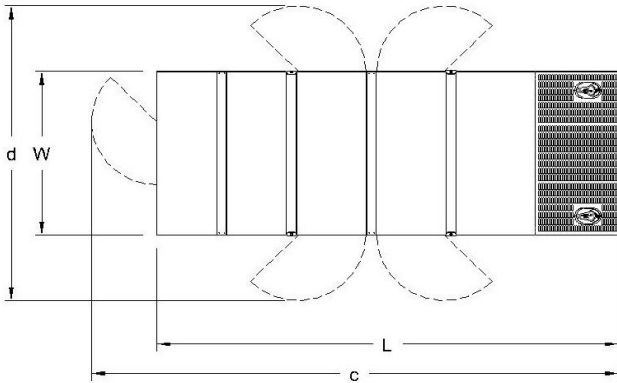
### Fuel Consumption

Load	110%	100%	75%	50%
[lt / h]	N/A	195	140	91
Fuel Tank Capacity [lt - h] :	1500 ltrs external type			

Based on diesel fuel with a specific gravity of 0.85 and conforming to TS EN590

Class A2

\* Optional Item



### Diesel Engine

Manufacturer :	Cummins
Engine Model :	VTA28G6
No. of Cylinders / Alignment :	12V
Bore / Stroke [mm] :	140 / 152
Compression Ratio :	13,1/1
Displacement [lt] :	28
Engine Speed [rpm] :	1500
Gross Engine Power ESP / PRP [kW] :	733 / N/A

### Generator

Manufacturer :	Leroy Somer
Alternator Model :	TAL049C
Bearings Type :	Single
Insulation Class :	H
Winding Pitch :	2/3
No. of Wires Terminal :	6
Frequency / Poles :	50Hz / 4p
Voltage (Ph-Ph / Ph-N) :	400V / 230V
Output Power ( 163°C / 27°C ) :	730 kVA / 584 kW

### Prime Power (PRP)

A Prime rated generator set is capable of providing power to a varying load for an unlimited number of hours per year. Ten percent overload is allowed at one in 12 hours.

### Emergency Standby Power (ESP)

A Standby rated generator set is capable of providing max. power to a varying load for 200 hours per year. No overload is allowed.

### Standard Reference Conditions

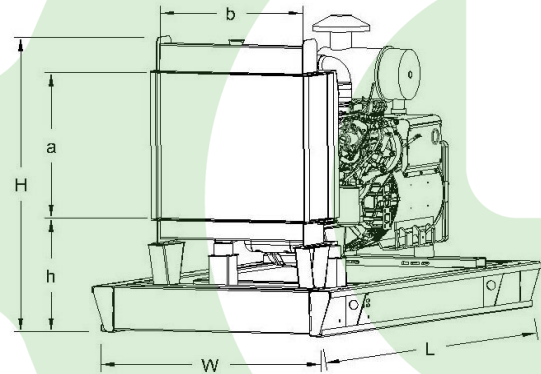
A specified values are given for 25°C ambient temperature, 100m above sea level and 30% relative humidity.

### Dimensions & Weights

	L x W x H (mm) / c x d (mm)	Wet (kg)
Canopy :	4800 x 2000 x 3270 / TBA	7030 kg
	L x W x H (mm) / a x b x h (mm)	Wet (kg)
W/O Canopy :	4250 x 1650 x 2350 / 1500 x 1590 510	5480 kg

Dry = Without any liquid

Wet = With lube oil, coolant and fuel



Air Intake System : Turbo Charged and After Cooled

Governor Type / Class 8528 : Electronic / G2

Total Oil Capacity [lt] : 83

Oil Type : API CI-4 / 15W-40

Cooling System Capacity [lt] : 182

Recommended Fuel : TS EN590, Class A2 Diesel

Emissions Compliance : N/A

Housing - Flywheel : SAE 0

Regulation Type / Model : AVR / R150

Protection Class : IP23

Efficiency (Pf 0,8 Prime): 94,9%

Voltage Regulation (Steady State) : ± 1.0%

THD (Total Harmonic Distortion) : < 1,5% w/o load/ < 5 % on load

15% 455 kVA

Voltage Dip. 25% 860 kVA

30% 1100 kVA

f = 50Hz, cos φ = 0,6, motor starting is SHUNT is for given.