

GENERATOR SET

Power Ratings

Voltage, Frequency	PRP	ESP
400V, 50Hz cosφ = 0.8	638kVA / 510,4kW	700kVA / 560kW
Engine Make / Model :	Cummins - VTA28G5	
Generator Make / Model :	Leroy Somer - TAL047F	
Control Panel :	ComAp Inteligen AMF9	
Charge Alternator [V / A] :	24V (Negative) / 55A	
Battery Charger [V / A] :	24 / 5	
Battery / Capacity [V / Ah] :	2 x 180 Ah	
Block Water Heater [W] :	2 X 2000 W / 230V	
ATS Model / Length x Width x Height4 * :	ATS 1050A / 1000X850X320	

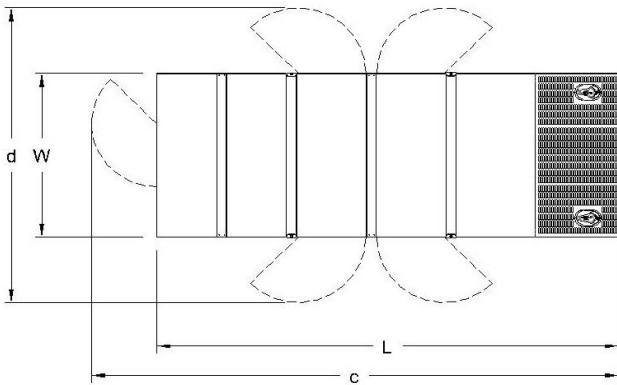
Fuel Consumption

Load	110%	100%	75%	50%
[lt / h]	154	140	104	73
Fuel Tank Capacity [lt - h] :	725 ltrs open skid 850 ltrs canopied			

Based on diesel fuel with a specific gravity of 0.85 and conforming to TS EN590

Class A2

* Optional Item



Prime Power (PRP)

A Prime rated generator set is capable of providing power to a varying load for an unlimited number of hours per year. Ten percent overload is allowed at one in 12 hours.

Emergency Standby Power (ESP)

A Standby rated generator set is capable of providing max. power to a varying load for 200 hours per year. No overload is allowed.

Standard Reference Conditions

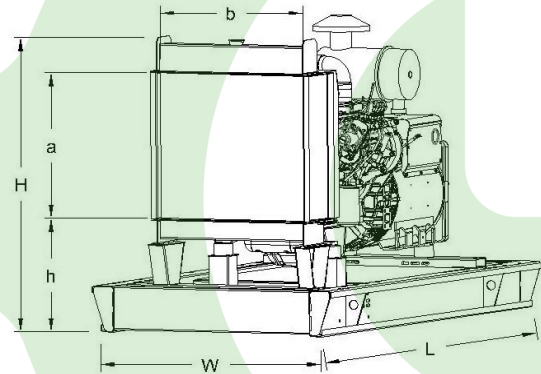
A specified values are given for 25°C ambient temperature, 100m above sea level and 30% relative humidity.

Dimensions & Weights

	L x W x H (mm) / c x d (mm)	Wet (kg)
Canopy :	4100 x 1800 x 3170 / TBA	6900 kg
	L x W x H (mm) / a x b x h (mm)	Dry (kg)
W/O Canopy :	3850 x 1600 x 2450 / 1650 x 1350 630	5000 kg

Dry = Without any liquid

Wet = With lube oil, coolant and fuel



Diesel Engine

Manufacturer :	Cummins
Engine Model :	VTA28G5
No. of Cylinders / Alignment :	12V
Bore / Stroke [mm] :	140 / 152
Compression Ratio :	13,1/1
Displacement [lt] :	28
Engine Speed [rpm] :	1500
Gross Engine Power ESP / PRP [kW] :	612 / 560

Generator

Manufacturer :	Leroy Somer
Alternator Model :	TAL047F
Bearings Type :	Single
Insulation Class :	H
Winding Pitch :	2/3
No. of Wires Terminal :	6
Frequency / Poles :	50Hz / 4p
Voltage (Ph-Ph / Ph-N) :	400V / 230V
Output Power (163°C / 27°C) :	730 kVA / 584 kW

Air Intake System :	Turbo Charged and After Cooled
Governor Type / Class 8528 :	Electronic / G2
Total Oil Capacity [lt] :	83
Oil Type :	API CI-4 / 15W-40
Cooling System Capacity [lt] :	170
Recommended Fuel :	TS EN590, Class A2 Diesel
Emissions Compliance :	N/A
Housing - Flywheel :	SAE 1

Regulation Type / Model :	AVR / R150	
Protection Class :	IP23	
Efficiency (Pf 0,8 Prime):	94,9%	
Voltage Regulation (Steady State) :	± 1.0%	
THD (Total Harmonic Distortion) :	< 1,5% w/o load/ < 5 % on load	
	15%	455 kVA
Voltage Dip.	25%	860 kVA
	30%	1100 kVA

f = 50Hz, cos φ = 0,6, motor starting is SHUNT is for given.