

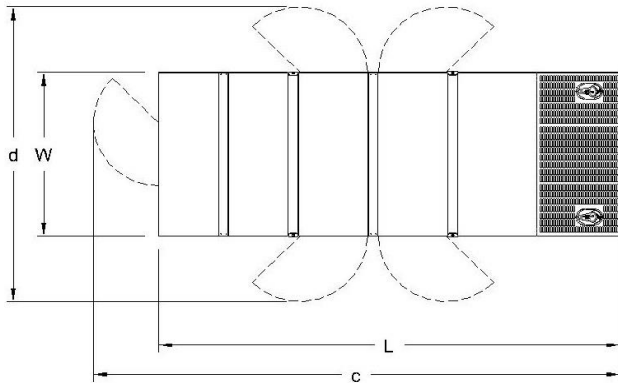
GENERATOR SET

Power Ratings

Voltage, Frequency	PRP	ESP
400V, 50Hz cosφ = 0.8	60kVA / 48kW	66kVA / 53kW
Engine Make / Model :	Cummins - S3.8G7	
Generator Make / Model :	Leroy Somer - TAL042H	
Control Panel :	ComAp Inteligen AMF9	
Charge Alternator [V / A] :	14V / 40A	
Battery Charger [V / A] :	12 / 5	
Battery / Capacity [V / Ah] :	1 x 72 Ah	
Block Water Heater [W] :	1 X 1000 W / 230V	
ATS Model / Length x Width x Dept * :	ATS 100A / 500X1100X160	

Fuel Consumption

Load	110%	100%	75%	50%
[lt / h]	16,1	14,7	11	6,1
Fuel Tank Capacity [lt - h] :	150 ltrs open skid 140 ltrs canopied			
<i>Based on diesel fuel with a specific gravity of 0.85 and conforming to TS EN590 Class A2</i>				



Diesel Engine

Manufacturer :	Cummins
Engine Model :	S3.8G7
No. of Cylinders / Alignment :	4L
Bore / Stroke [mm] :	97 / 128
Compression Ratio :	17,5/1
Displacement [lt] :	3,8
Engine Speed [rpm] :	1500
Gross Engine Power ESP / PRP [kW] :	64,9 / 59,6

Generator

Manufacturer :	Leroy Somer
Alternator Model :	TAL042H
Bearings Type :	Single
Insulation Class :	H
Winding Pitch :	2/3
No. of Wires Terminal :	4
Frequency / Poles :	50Hz / 4p
Voltage (Ph-Ph / Ph-N) :	400V / 230V
Output Power (163°C / 27°C) :	66 kVA / 53 kW

Prime Power (PRP)

A Prime rated generator set is capable of providing power to a varying load for an unlimited number of hours per year. Ten percent overload is allowed at one in 12 hours.

Emergency Standby Power (ESP)

A Standby rated generator set is capable of providing max. power to a varying load for 200 hours per year. No overload is allowed.

Standard Reference Conditions

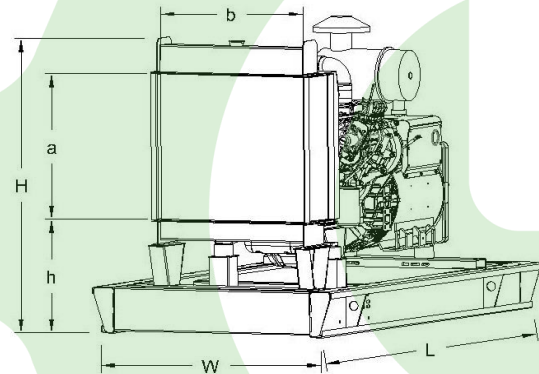
A specified values are given for 25°C ambient temperature, 100m above sea level and 30% relative humidity.

Dimensions & Weights

	L x W x H (mm) / c x d (mm)	Wet (kg)
Canopy :	2350 x 1100 x 1730 / TBA	1240 kg
	L x W x H (mm) / a x b x h (mm)	Dry (kg)
W/O Canopy :	1850 x 900 x 1400 / 610 x 660 x 760	865 kg

Dry = Without any liquid

Wet = With lube oil, coolant and fuel



Air Intake System :	Natural Aspiration
Governor Type / Class 8528 :	Mechanical / G2
Total Oil Capacity [lt] :	11
Oil Type :	API CI-4 / 15W-40
Cooling System Capacity [lt] :	16,5
Recommended Fuel :	TS EN590, Class A2 Diesel
Emissions Compliance :	N/A
Housing - Flywheel :	SAE 3/10

Regulation Type / Model :	AVR / R120	
Protection Class :	IP23	
Efficiency (Pf 0,8 Prime)	89,9%	
Voltage Regulation (Steady State) :	± 1.0%	
THD (Total Harmonic Distortion) :	< 2.0% w/o load/ < 5 % on load	
	15%	41 kVA
Voltage Dip.	25%	77 kVA
	30%	99 kVA

f = 50Hz, cos φ = 0,6, motor starting SHUNT is for given.