

## GENERATOR SET

### Power Ratings

Voltage, Frequency	PRP	ESP
400V, 50Hz cosφ = 0.8	320kVA / 256kW	350kVA / 280kW
Engine Make / Model :	Cummins - 6LTA A9.5G1	
Generator Make / Model :	Leroy Somer - TAL046G	
Control Panel :	ComAp Inteligen AMF9	
Charge Alternator [V / A] :	24V / 70A	
Battery Charger [V / A] :	24V / 5	
Battery / Capacity [V / Ah] :	2 x (12V 150 Ah)	
Block Water Heater [W] :	1500 W / 230V	
ATS Model / Length x Width x Height * :	ATS 500A / 750X750X300	

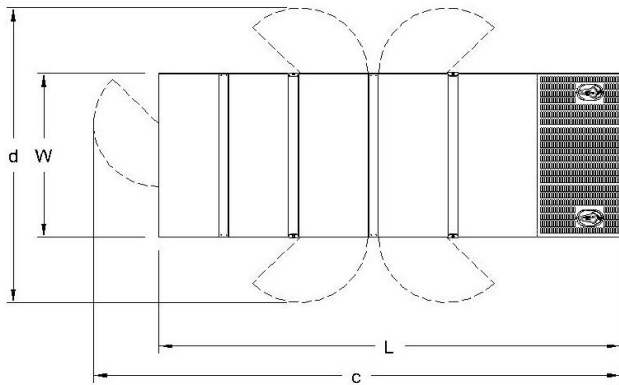
### Fuel Consumption

Load	110%	100%	75%	50%
[lt / h]	78	70	52	35
Fuel Tank Capacity [lt - h] :	400 ltrs open skid 450 ltrs canopied			

Based on diesel fuel with a specific gravity of 0.85 and conforming to TS EN590

Class A2

\* Optional Item



### Prime Power (PRP)

A Prime rated generator set is capable of providing power to a varying load for an unlimited number of hours per year. Ten percent overload is allowed at one in 12 hours.

### Emergency Standby Power (ESP)

A Standby rated generator set is capable of providing max. power to a varying load for 200 hours per year. No overload is allowed.

### Standard Reference Conditions

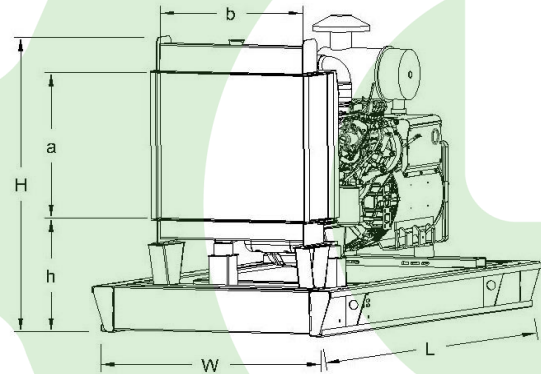
A specified values are given for 25°C ambient temperature, 100m above sea level and 30% relative humidity.

### Dimensions & Weights

	L x W x H (mm) / c x d (mm)	Wet (kg)
Canopy :	3400 x 1400 x 2150 / TBA	2940 kg
	L x W x H (mm) / a x b x h (mm)	Wet (kg)
W/O Canopy :	2700 x 1250 x 1900 / 1020 x 1063 x 540	2340 kg

Dry = Without any liquid

Wet = With lube oil, coolant and fuel



### Diesel Engine

Manufacturer :	Cummins
Engine Model :	6LTA A9.5G1
No. of Cylinders / Alignment :	6L
Bore / Stroke [mm] :	116 / 148
Compression Ratio :	16,6/1
Displacement [lt] :	9,5
Engine Speed [rpm] :	1500
Gross Engine Power ESP / PRP [kW] :	320 / 290

### Generator

Manufacturer :	Leroy Somer
Alternator Model :	TAL046G
Bearings Type :	Single
Insulation Class :	H
Winding Pitch :	2/3
No. of Wires Terminal :	6
Frequency / Poles :	50Hz / 4p
Voltage (Ph-Ph / Ph-N) :	400V / 230V
Output Power ( 163°C / 27°C ) :	360 kVA / 288 kW

Air Intake System :	Turbo Charged, Air Cooled
Governor Type / Class 8528 :	Electronic
Total Oil Capacity [lt] :	28,1
Oil Type :	API CI-4 / 15W-40
Cooling System Capacity [lt] :	55,5
Recommended Fuel :	TS EN590, Class A2 Diesel
Emissions Compliance :	N/A
Housing - Flywheel :	SAE 1

Regulation Type / Model :	AVR / R150	
Protection Class :	IP23	
Efficiency :	92,7%	
Voltage Regulation (Steady State) :	± 1.0%	
THD (Total Harmonic Distortion) :	< 2,5% w/o load/ < 5 % on load	
	15%	220 kVA
Voltage Dip.	25%	420 kVA
	30%	550 kVA

f = 50Hz, cos φ = 0,6 , motor starting is SHUNT is for given.