

GENERATOR SET

Power Ratings

| Voltage, Frequency | PRP | ESP |
|--------------------------|------------------|------------------|
| 400V, 50Hz cosφ = 0.8 | 2025kVA / 1620kW | 2250kVA / 1800kW |

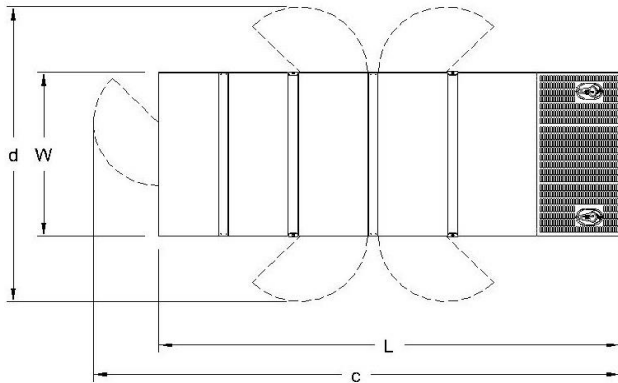
| | |
|--|----------------------|
| Engine Make / Model : | Cummins - QSK60G4 |
| Generator Make / Model : | Stamford - P1734F |
| Control Panel : | ComAp Inteligen AMF9 |
| Charge Alternator [V / A] : | 24V / 53A |
| Battery Charger [V / A] : | 24 / 55A |
| Battery / Capacity [V / Ah] : | 4 x 150 Ah |
| Block Water Heater [W] : | 2 x 2000 W / 230V |
| ATS Model / Length x Width x Depth * : | TBA |

Fuel Consumption

| Load | 110% | 100% | 75% | 50% |
|----------|------|------|-----|-----|
| [lt / h] | 437 | 394 | 291 | 200 |

Fuel Tank Capacity [lt - h] : 3600 ltrs (EXT) for open skid and canopied.

Based on diesel fuel with a specific gravity of 0.85 and conforming to TS EN590 Class A2



Diesel Engine

| | |
|-------------------------------------|-------------|
| Manufacturer : | Cummins |
| Engine Model : | QSK60G4 |
| No. of Cylinders / Alignment : | 16V |
| Bore / Stroke [mm] : | 159 / 190 |
| Compression Ratio : | 14,5/1 |
| Displacement [lt] : | 60,2 |
| Engine Speed [rpm] : | 1500 |
| Gross Engine Power ESP / PRP [kW] : | 1915 / 1730 |

Generator

| | |
|---------------------------------|--------------------|
| Manufacturer : | Stamford |
| Alternator Model : | P1734F |
| Bearings Type : | Single |
| Insulation Class : | H |
| Winding Pitch : | 2/3 |
| No. of Wires Terminal : | 6 |
| Frequency / Poles : | 50Hz / 4p |
| Voltage (Ph-Ph / Ph-N) : | 400V / 230V |
| Output Power (163°C / 27°C) : | 2250 kVA / 1800 kW |

*Arep is standard, PMG is optional

Prime Power (PRP)

A Prime rated generator set is capable of providing power to a varying load for an unlimited number of hours per year. Ten percent overload is allowed at one in 12 hours.

Emergency Standby Power (ESP)

A Standby rated generator set is capable of providing max. power to a varying load for 200 hours per year. No overload is allowed.

Standard Reference Conditions

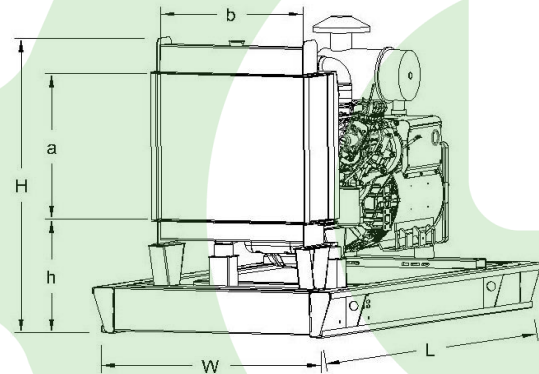
A specified values are given for 25°C ambient temperature, 100m above sea level and 30% relative humidity.

Dimensions & Weights

| | L x W x H (mm) / c x d (mm) | Wet (kg) |
|--------------|--|----------|
| Canopy : | 65000 x 2700 x 4370 / TBA | 15050 kg |
| | L x W x H (mm) / a x b x h (mm) | Wet (kg) |
| W/O Canopy : | 6200 x 2500 x 3400 / 2200 x 2247 x 663 | 13130 kg |

Dry = Without any liquid

Wet = With lube oil, coolant and fuel



| | |
|--------------------------------|-----------------------------|
| Air Intake System : | Turbo Charged, After Cooled |
| Governor Type / Class 8528 : | Electronic / G2 |
| Total Oil Capacity [lt] : | 280 |
| Oil Type : | API CI-4 / 15W-40 |
| Cooling System Capacity [lt] : | 242 |
| Recommended Fuel : | TS EN590, Class A2 Diesel |
| Emissions Compliance : | TA Luft |
| Housing - Flywheel : | SAE 0 |

| | |
|-------------------------------------|---------------------------------|
| Regulation Type / Model : | AVR / MX341 |
| Protection Class : | IP23 |
| Efficiency : | 96,1% |
| Voltage Regulation (Steady State) : | ± 0.5% |
| THD (Total Harmonic Distortion) : | < 1,5% w/o load / < 5 % on load |
| | 15% 1920 kVA |
| Voltage Dip. | 25% 3600 kVA |
| | 29% 4700 kVA |

f = 50Hz, 400V, cosφ = 0,8 is for given.