

GENERATOR SET

Power Ratings

Voltage, Frequency	PRP	ESP
400V, 50Hz cosφ = 0.8	200kVA / 160kW	220kVA / 176kW

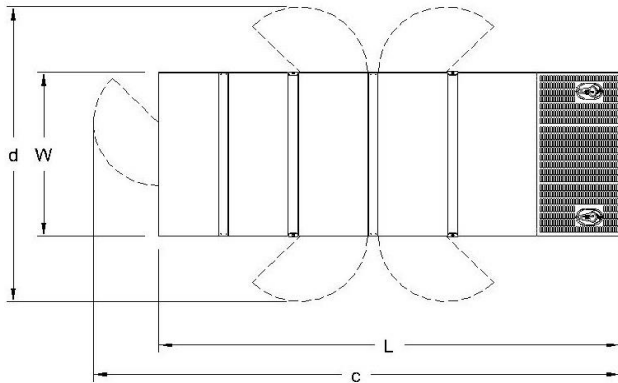
Engine Make / Model :	Cummins - QSB7G5
Generator Make / Model :	Leroy Somer - TAL046B
Control Panel :	ComAp Inteligen AMF9
Charge Alternator [V / A] :	12V / 70A (Negative)
Battery Charger [V / A] :	12 / 5
Battery / Capacity [V / Ah] :	2 x 105 Ah
Block Water Heater [W] :	1500 W / 230V
ATS Model / Length x Width x Dept * :	ATS 250A / 750X300X750

Fuel Consumption

Load	110%	100%	75%	50%
[lt / h]	51	45	36	26

Fuel Tank Capacity [lt - h] : 300 ltrs open skid 410 ltrs canopied

Based on diesel fuel with a specific gravity of 0.85 and conforming to TS EN590 Class A2



Diesel Engine

Manufacturer :	Cummins
Engine Model :	QSB7G5
No. of Cylinders / Alignment :	6L
Bore / Stroke [mm] :	107 / 124
Compression Ratio :	17,5/1
Displacement [lt] :	6,69
Engine Speed [rpm] :	1500
Gross Engine Power ESP / PRP [kW] :	220 / 186

Generator

Manufacturer :	Leroy Somer
Alternator Model :	TAL046B
Bearings Type :	Single
Insulation Class :	H
Winding Pitch :	2/3
No. of Wires Terminal :	6
Frequency / Poles :	50Hz / 4p
Voltage (Ph-Ph / Ph-N) :	400V / 230V
Output Power (163°C / 27°C) :	220kVA / 176kW

Prime Power (PRP)

A Prime rated generator set is capable of providing power to a varying load for an unlimited number of hours per year. Ten percent overload is allowed at one in 12 hours.

Emergency Standby Power (ESP)

A Standby rated generator set is capable of providing max. power to a varying load for 200 hours per year. No overload is allowed.

Standard Reference Conditions

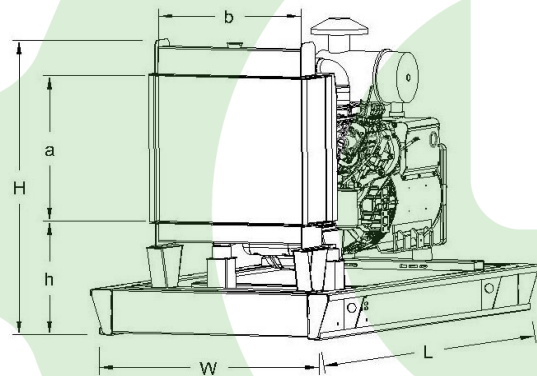
A specified values are given for 25°C ambient temperature, 100m above sea level and 30% relative humidity.

Dimensions & Weights

	L x W x H (mm) / c x d (mm)	Wet (kg)
Canopy :	3100 x 1250 x 2060 / TBA	2070 kg
	L x W x H (mm) / a x b x h (mm)	Wet (kg)
W/O Canopy :	2600 x 1050 x 1750 / 800 x 810 635	1610 kg

Dry = Without any liquid

Wet = With lube oil, coolant and fuel



Air Intake System :	Turbo Charged
Governor Type / Class 8528 :	Electronic / G2
Total Oil Capacity [lt] :	17,4
Oil Type :	API CI-4 / 15W-40
Cooling System Capacity [lt] :	36,34
Recommended Fuel :	TS EN590, Class A2 Diesel
Emissions Compliance :	EU Stage IIIA
Housing - Flywheel :	SAE 3/11,5

Regulation Type / Model :	AVR / R150	
Protection Class :	IP23	
Efficiency (Pf 0,8 Prime) :	91,4%	
Voltage Regulation (Steady State) :	± 1.0%	
THD (Total Harmonic Distortion) :	< 2,5% w/o load/ < 5 % on load	
	15%	155kVA
Voltage Dip.	25%	295kVA
	30%	385kVA

f = 50Hz, Voltage dip is given for Locked rotor at P.F.=0.6 .