

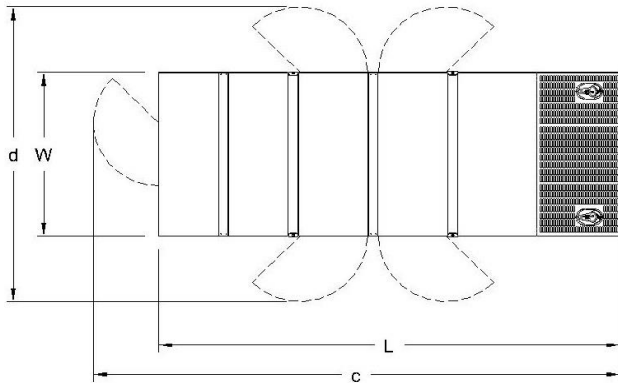
## GENERATOR SET

### Power Ratings

Voltage, Frequency	PRP	ESP
400V, 50Hz cosφ = 0.8	159kVA / 127kW	175kVA / 140kW
Engine Make / Model :	Cummins - 6BTA5.9G7	
Generator Make / Model :	Leroy Somer - TAL044K	
Control Panel :	ComAp Inteligen AMF9	
Charge Alternator [V / A] :	12V / 55A	
Battery Charger [V / A] :	12 / 5	
Battery / Capacity [V / Ah] :	1 x 105 Ah	
Block Water Heater [W] :	1500 W / 230V	
ATS Model / Length x Width x Dept * :	ATS 250A / 750X300X750	

### Fuel Consumption

Load	110%	100%	75%	50%
[lt / h]	41	37	29	19
Fuel Tank Capacity [lt - h] :	200 ltrs open skid 250 ltrs canopied			
Based on diesel fuel with a specific gravity of 0.85 and conforming to TS EN590 Class A2				



### Diesel Engine

Manufacturer :	Cummins
Engine Model :	6BTA5.9G7
No. of Cylinders / Alignment :	6L
Bore / Stroke [mm] :	102 / 120
Compression Ratio :	17,5/1
Displacement [lt] :	5,9
Engine Speed [rpm] :	1500
Gross Engine Power ESP / PRP [kW] :	160 / 145

### Generator

Manufacturer :	Leroy Somer
Alternator Model :	TAL044K
Bearings Type :	Single
Insulation Class :	H
Winding Pitch :	2/3
No. of Wires Terminal :	6
Frequency / Poles :	50Hz / 4p
Voltage (Ph-Ph / Ph-N) :	400V / 230V
Output Power ( 163°C / 27°C ) :	181 kVA / 145 kW

### Prime Power (PRP)

A Prime rated generator set is capable of providing power to a varying load for an unlimited number of hours per year. Ten percent overload is allowed at one in 12 hours.

### Emergency Standby Power (ESP)

A Standby rated generator set is capable of providing max. power to a varying load for 200 hours per year. No overload is allowed.

### Standard Reference Conditions

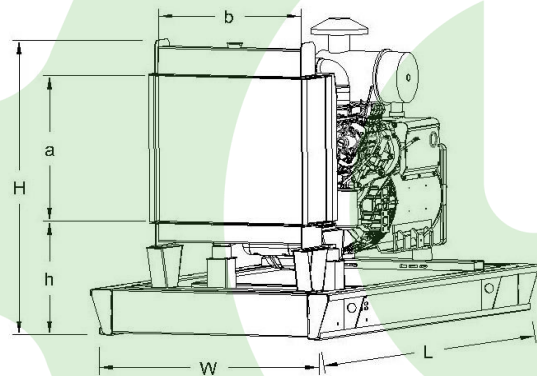
A specified values are given for 25°C ambient temperature, 100m above sea level and 30% relative humidity.

### Dimensions & Weights

	L x W x H (mm) / c x d (mm)	Wet (kg)
Canopy :	3000 x 1100 x 1930 / TBA	1976 kg
	L x W x H (mm) / a x b x h (mm)	Wet (kg)
W/O Canopy :	2400 x 900 x 1750 / 1000 x 750 x 570	1576 kg

Dry = Without any liquid

Wet = With lube oil, coolant and fuel



Air Intake System :	Turbocharged
Governor Type / Class 8528 :	Electronic / G2
Total Oil Capacity [lt] :	16,4
Oil Type :	API CI-4 / 15W-40
Cooling System Capacity [lt] :	21,4
Recommended Fuel :	TS EN590, Class A2 Diesel
Emissions Compliance :	N/A
Housing - Flywheel :	SAE 3/11,5

Regulation Type / Model :	AVR / R120	
Protection Class :	IP23	
Efficiency (Pf 0,8 Prime)	92,7%	
Voltage Regulation (Steady State) :	± 1.0%	
THD (Total Harmonic Distortion) :	< 2% w/o load/ < 5 % on load	
	15%	105 kVA
Voltage Dip.	25%	200 kVA
	30%	305 kVA

f = 50Hz, cosφ = 0,6, motor starting SHUNT is for given.