

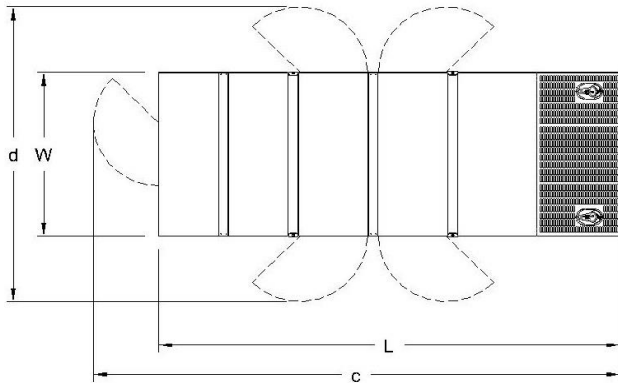
GENERATOR SET

Power Ratings

Voltage, Frequency	PRP	ESP
400V, 50Hz cosφ = 0.8	135kVA / 108kW	150kVA / 120kW
Engine Make / Model :	Cummins - 6BTA5.9G6	
Generator Make / Model :	Leroy Somer - TAL044H	
Control Panel :	ComAp Inteligen AMF9	
Charge Alternator [V / A] :	12V / 55A	
Battery Charger [V / A] :	12 / 5 A	
Battery / Capacity [V / Ah] :	1 x 405 Ah	
Block Water Heater [W] :	1500 W / 230V	
ATS Model / Length x Width x Dept * :	ATS 250A / 600X600X250	

Fuel Consumption

Load	110%	100%	75%	50%
[lt / h]	37,05	35,16	26,58	17,92
Fuel Tank Capacity [lt - h] :	200 ltrs open skid 250 ltrs canopied			
<i>Based on diesel fuel with a specific gravity of 0.85 and conforming to TS EN590 Class A2</i>				



Diesel Engine

Manufacturer :	Cummins
Engine Model :	6BTA5.9G6
No. of Cylinders / Alignment :	6L
Bore / Stroke [mm] :	102 / 120
Compression Ratio :	17,5/1
Displacement [lt] :	5,9
Engine Speed [rpm] :	1500
Gross Engine Power ESP / PRP [kW] :	145 / 135

Generator

Manufacturer :	Leroy Somer
Alternator Model :	TAL044H
Bearings Type :	Single
Insulation Class :	H
Winding Pitch :	2/3
No. of Wires Terminal :	4
Frequency / Poles :	50Hz / 4p
Voltage (Ph-Ph / Ph-N) :	400V / 230V
Output Power (163°C / 27°C) :	150 kVA / 120 kW

Prime Power (PRP)

A Prime rated generator set is capable of providing power to a varying load for an unlimited number of hours per year. Ten percent overload is allowed at one in 12 hours.

Emergency Standby Power (ESP)

A Standby rated generator set is capable of providing max. power to a varying load for 200 hours per year. No overload is allowed.

Standard Reference Conditions

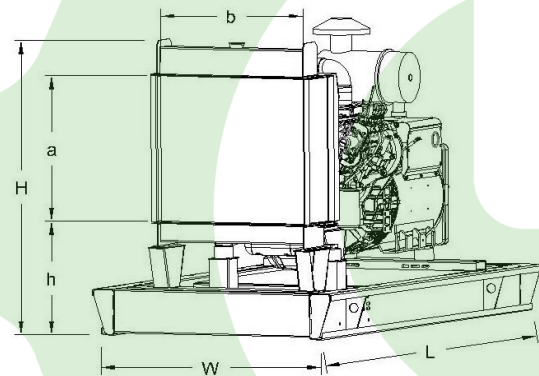
A specified values are given for 25°C ambient temperature, 100m above sea level and 30% relative humidity.

Dimensions & Weights

	L x W x H (mm) / c x d (mm)	Dry (kg) / Wet (kg)
Canopy :	3000 x 1100 x 1930 / TBA	1780 kg
	L x W x H (mm) / 1000 x 750 x 570	Dry (kg) / Wet (kg)
W/O Canopy :	2400 x 900 x 1750 / TBA	1330 kg

Dry = Without any liquid

Wet = With lube oil, coolant and fuel



Air Intake System :	TurboCharged
Governor Type / Class 8528 :	Electronic / G2
Total Oil Capacity [lt] :	16,4
Oil Type :	API CI-4 / 15W-40
Cooling System Capacity [lt] :	21,4
Recommended Fuel :	TS EN590, Class A2 Diesel
Emissions Compliance :	N/A
Housing - Flywheel :	SAE 3/11,5

Regulation Type / Model :	AVR / R120
Protection Class :	IP23
Efficiency :	91,6%
Voltage Regulation (Steady State) :	± 1.0%
THD (Total Harmonic Distortion) :	< 2% w/o load/ < 5 % on load
	15% 85 kVA
Voltage Dip.	25% 165 kVA
	29% 210 kVA

f = 50Hz, cos φ = 0,6 Motor Starting SHUNT is for given.