

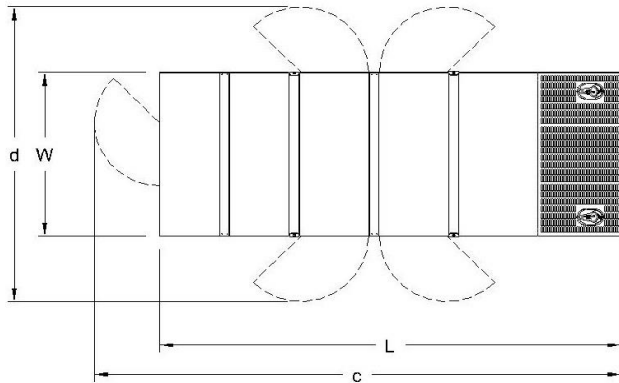
## GENERATOR SET

### Power Ratings

Voltage, Frequency	PRP	ESP
400V, 50Hz cosφ = 0.8	405kVA / 324kW	445kVA / 356kW
Engine Make / Model :	Baudouin - 6M21G440/5	
Generator Make / Model :	Leroy Somer - TAL047A	
Control Panel :	ComAp AMF 9 Lite	
Charge Alternator [V / A] :	24.0 / 70-Negative	
Battery Charger [V / A] :	27.3 / 5	
Battery / Capacity [V / Ah] :	2 x 105 Ah	
Block Water Heater [W] :	1500 w, 230 V	
ATS Model / Length x Width x Dept * :	650 A / 850 x 850 x 300	

### Fuel Consumption

Load	110%	100%	75%	50%
[lt / h]	94,9	85	63,5	43,1
Fuel Tank Capacity [lt - h] : Open skid / Canopied : 9570-9 / 500-8				
Based on diesel fuel with a specific gravity of 0.85 and conforming to TS EN590 Class A2				



### Diesel Engine

Manufacturer :	Baudouin
Engine Model :	6M21G440/5
No. of Cylinders / Alignment :	6 / L
Bore / Stroke [mm] :	127 / 165
Compression Ratio :	16,0 : 1
Displacement [lt] :	12.54
Engine Speed [rpm] :	1500
Gross Engine Power ESP / PRP [kW] :	368 / 405

### Generator

Manufacturer :	Leroy Somer
Alternator Model :	TAL047A
Bearings Type :	Single
Insulation Class :	H
Winding Pitch :	2/3
No. of Wires Terminal :	6
Frequency / Poles :	50Hz / 4p
Voltage (Ph-Ph / Ph-N) :	400V / 230V
Output Power ( 163°C / 27°C ) :	410kVA / 328kW

### Prime Power (PRP)

A Prime rated generator set is capable of providing power to a varying load for an unlimited number of hours per year. Ten percent overload is allowed at one in 12 hours.

### Emergency Standby Power (ESP)

A Standby rated generator set is capable of providing max. power to a varying load for 200 hours per year. No overload is allowed.

### Standard Reference Conditions

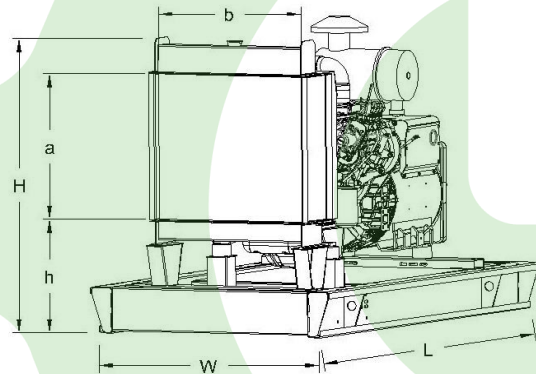
A specified values are given for 25°C ambient temperature, 100m above sea level and 30% relative humidity.

### Dimensions & Weights

	L x W x H (mm) / c x d (mm)	Wet (kg)
Canopy :	3350X1400X2770 / TBA	3555
	L x W x H (mm) / a x b x h (mm)	Wet (kg)
W/O Canopy :	3100X1300X1800 / 930 x 1040 605	2605

Dry = Without any liquid

Wet = With lube oil, coolant and fuel



Air Intake System :	Turbocharged & Intercooled
Governor Type / Class 8528 :	Electronic / G2
Total Oil Capacity [lt] :	32
Oil Type :	API CI-4, CH4/ 15W-40
Cooling System Capacity [lt] :	55
Recommended Fuel :	TS EN590, Class A2 Diesel
Emissions Compliance :	N/A
Housing - Flywheel :	1-14

Regulation Type / Model :	AVR / R150
---------------------------	------------

Protection Class :	IP23
--------------------	------

Efficiency :	93.3%
--------------	-------

Voltage Regulation (Steady State) :	± 1.0%
-------------------------------------	--------

THD (Total Harmonic Distortion) :	< 1.5%
-----------------------------------	--------

	15%	225kVA
--	-----	--------

Voltage Dip.	25%	430kVA
--------------	-----	--------

	29%	605kVA
--	-----	--------

f = 50Hz, Voltage dip is given for Locked rotor at P.F.=0.6 .